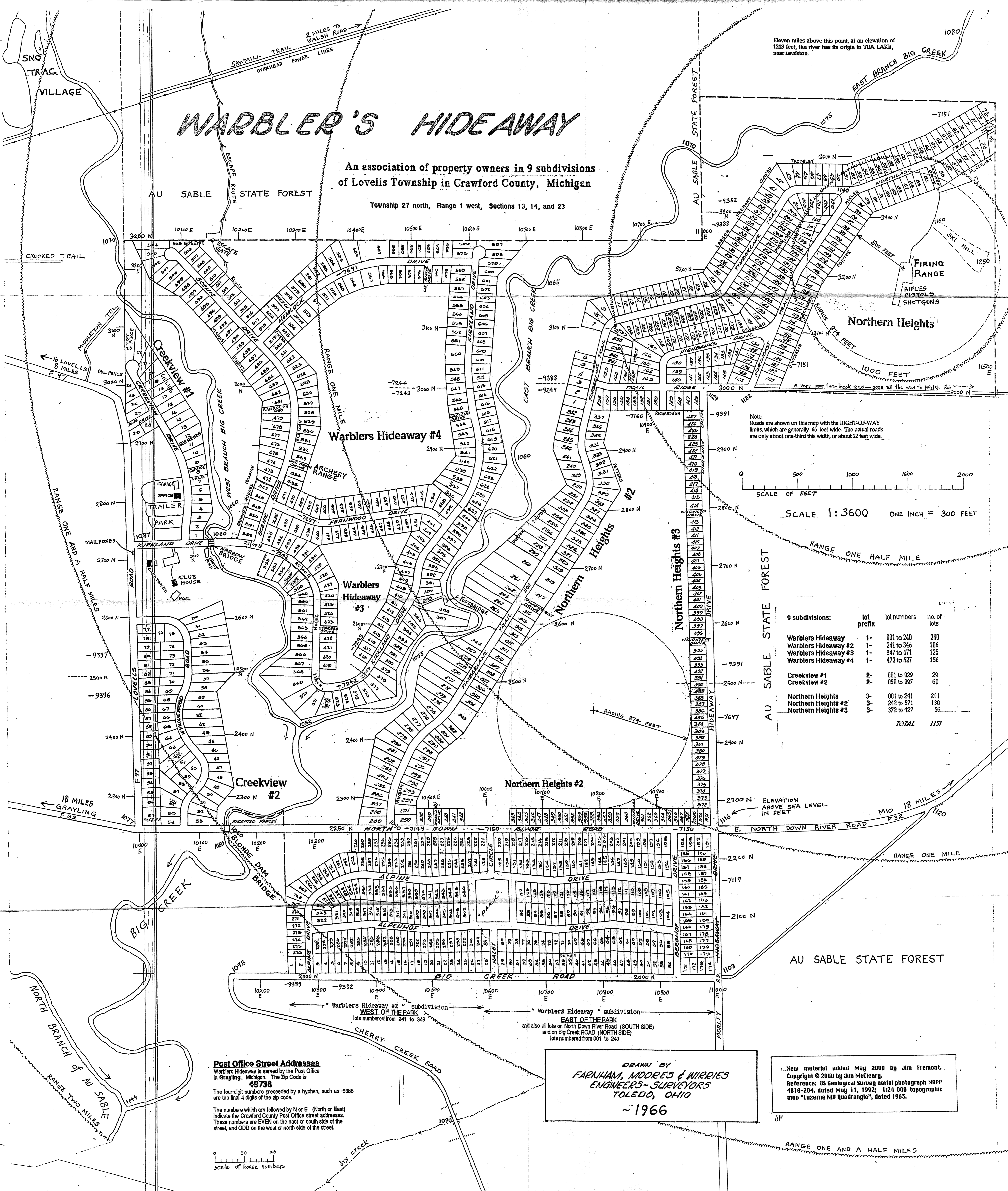


# WARBLER'S HIDEAWAY

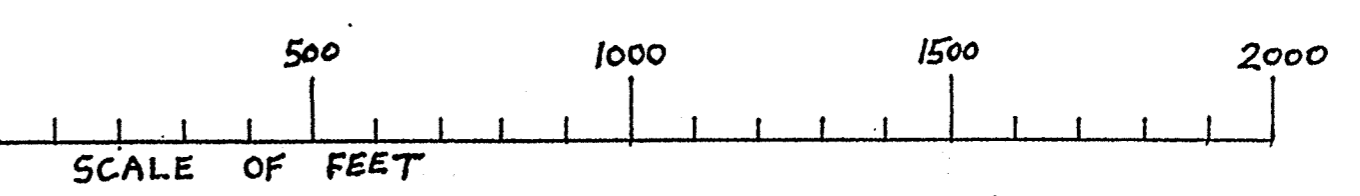
An association of property owners in 9 subdivisions  
of Lovell's Township in Crawford County, Michigan

Township 27 north, Range 1 west, Sections 13, 14, and 23

Eleven miles above this point, at an elevation of 1213 feet, the river has its origin in TEA LAKE, near Lewistown.



Note:  
Roads are shown on this map with the RIGHT-OF-WAY limits, which are generally 66 feet wide. The actual roads are only about one-third this width, or about 22 feet wide.



9 subdivisions:	lot prefix	lot numbers	no. of lots
Warblers Hideaway #1	1-	001 to 240	240
Warblers Hideaway #2	1-	241 to 346	106
Warblers Hideaway #3	1-	347 to 471	125
Warblers Hideaway #4	1-	472 to 627	156
Creekview #1	2-	001 to 029	29
Creekview #2	2-	030 to 097	68
Northern Heights #1	3-	001 to 241	241
Northern Heights #2	3-	242 to 371	130
Northern Heights #3	3-	372 to 427	56
<b>TOTAL</b>			<b>1151</b>

**Post Office Street Addresses**  
Warblers Hideaway is served by the Post Office in Grayling, Michigan. The Zip Code is **49738**

The four-digit numbers preceded by a hyphen, such as -9388 are the final 4 digits of the zip code.

The numbers which are followed by N or E (North or East) indicate the Crawford County Post Office street addresses. These numbers are EVEN on the east or south side of the street, and ODD on the west or north side of the street.

DRAWN BY  
**FARNHAM, MOORE & WIRRIES**  
ENGINEERS-SURVEYORS  
TOLEDO, OHIO  
~ 1966

New material added May 2000 by Jim Fremont.  
Copyright © 2000 by Jim McCleary.  
Reference: US Geological Survey aerial photograph NAPP 4818-204, dated May 11, 1992; 1:24 000 topographic map "Luzerne NW Quadrangle," dated 1963.